



How to Use and Configure CIMON PLC Link protocols via Ethernet?

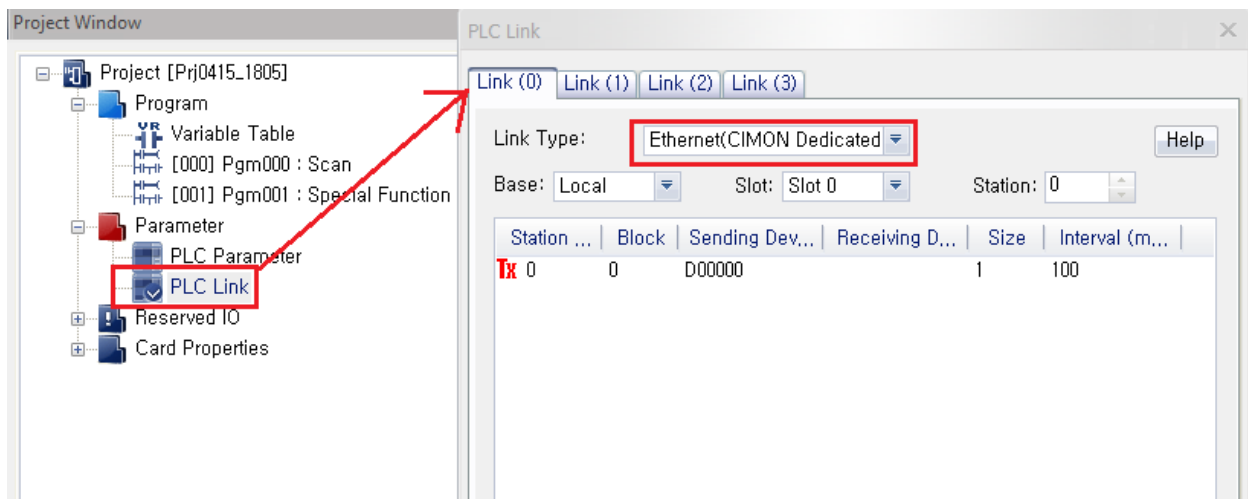


There are three types of CIMON PLC Link protocols which support Peer to Peer communication for CIMON PLCs (CM1 and CM3) via Ethernet.

- PLC Link (CIMON-Dedicated) Protocol – Max No. is 64 device.
 - PLC Link (Public) Protocol – Max No. is 64 device.
 - High Speed Link Protocol – Max No. is 64 device.
- ※ CM1-EC10A – Max. supported Node number is 16.
 - ※ CM1-EC01A – Max. supported Node number is 6.
 - ※ CM3-SP01EET – Max. supported Node number is 16.

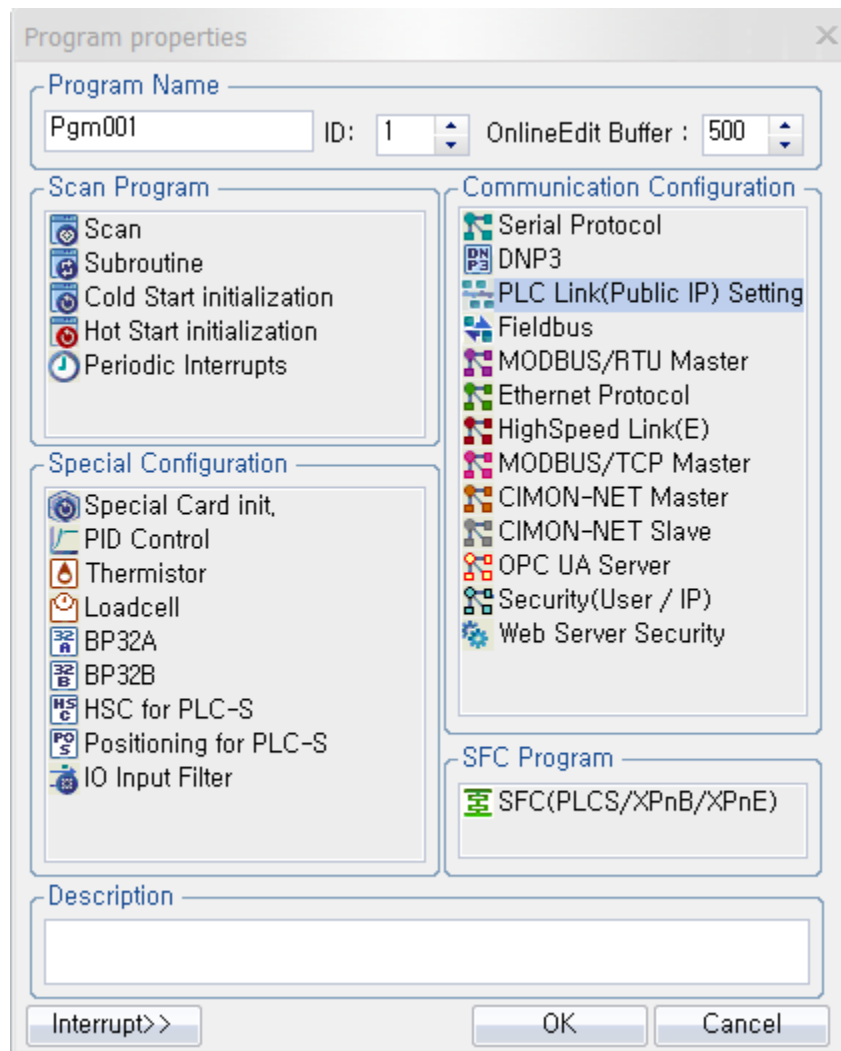
1. PLC Link (CIMON-Dedicated)

- This protocol only supports EC01A (CM1 Series).
- This protocol can be used only within one identical Network (Local to Expansion).
- Does NOT require to configure IP Address for each of multiple Ethernet modules.
- Can communicate by assigning a station for each of multiple Ethernet modules.
- Go to CICON Parameter on Project Window -> PLC Link -> Configure a Frame (SEND / REC)



2. PLC Link (Public)

- This protocol only supports EC01A, EC10A (CM1 Series).
- Communicates between same or other networks (Local to Local, Local to Expansion).
- Must require both IP Address and Station for each Ethernet module.
- Configure a special program named “PLC Link (Public IP) Setting” as shown below and assign an IP Address for each Ethernet module.



- Go to CIMON Parameter -> PLC Link -> Configure a Frame (SEND / RECEIVE) in the same manner as that of PLC Link (CIMON-Dedicated).

3. High Speed Link (Ethernet)

- Supports CM1 and CM3 Series.
- Supports between PLC-S CPUs (SP01EET included), between EC10As, and between PLC-S and EC10A.
- NOT support EC01A module.
- This protocol can be used only within one identical Network (Local to Expansion).
- Does NOT require to configure IP Address for each of multiple Ethernet modules.
- Needs to configure Local/Expansion, Slot#, and Station in High Speed Link program.
- Configure a special program named “High Speed Link(E)” and set up Ethernet module and Frame in CICON as shown below.

