



How to set up password security for PLC program and CIMON project?



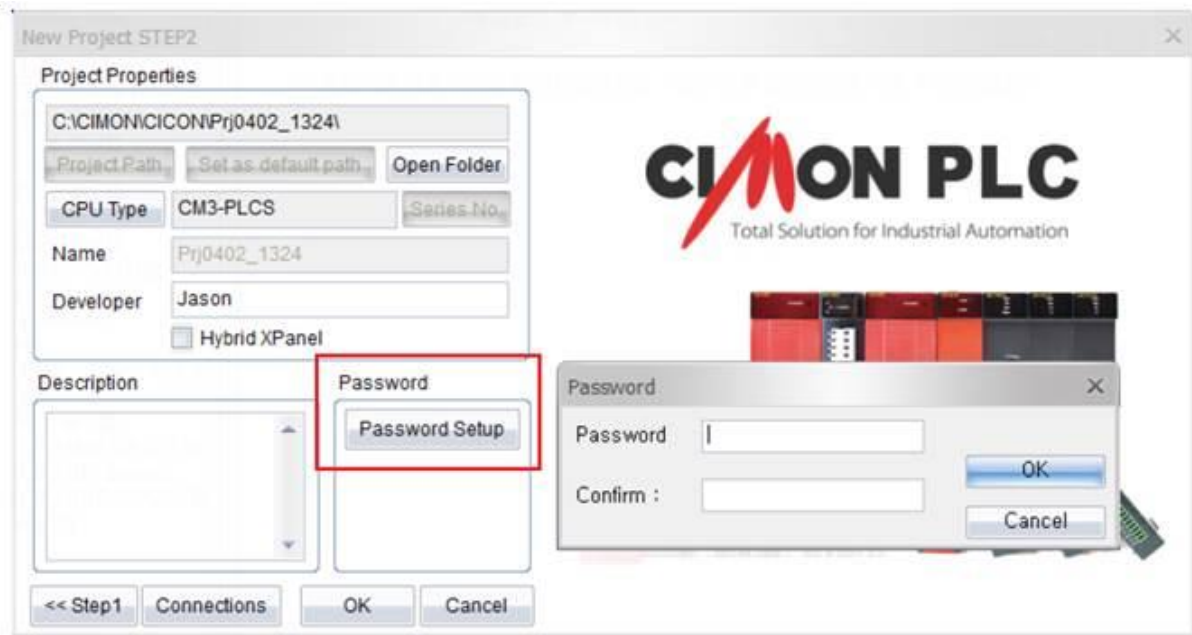
CIMON provides password security for both program and PLC to protect the PLC program and configuration access from an unauthorized person.

There are three ways you can protect the original program (by CIMON project password) and the connection to the PLC (by PLC password).

- **How to set up PLC password:** It is used to protect the connection to PLC CPU module.
To set up the PLC Password, CIMON must be connected to PLC CPU first.
Click Online → PLC Password.
If there is already an existing password, type the current password at Old.
If there is no password and it is the first time setting up the password, just leave it blank at Old and type new password at New.
Whenever you try to connect to PLC CPU module, CIMON asks you for the password.
So an unauthorized person will never be able to connect to PLC CPU installed at the field site without knowing the password that has been set up.



- **How to set up password for CIMON project:** It is used to protect the original PLC program.
Click File → Project Properties → Password Setup.
Without the password, a user cannot access the PLC program in CIMON.



- **How to disable the uploading program from PLC CPU to CIMON in PC:**

PLC Parameter → Basic → Prohibit Program Upload (PLC → PC)

If this [Prohibit Program Upload from PLC to PC] has been enabled in PLC parameter, then the unauthorized person cannot upload and open the original program in CIMON.

